



"Maa mahi,
ka ora"



Matamata
College

CONTACT

9 July 2021

End of Term 2

As Term Two draws to a close, I have asked the students to reflect on how well they have managed in demonstrating our four core values of: **Te Whakaute – Respect; Manaakitanga – Caring; Te Kawenga – Responsibility; Ngaakau Taratahi – Integrity** in their daily lives at school. Have they shown respect, caring, responsibility and integrity to themselves, each other and their teachers? Most students do, and none more so than our Head Students.

Congratulations to Casey, Ben and Adam who completed their Three Peaks Challenge on Saturday 19 June. With the support of family, friends and teachers they achieved the climbing of Mount Te Aroha, Wairere Falls and Mount Maunganui. They created a give a little page and have raised a significant amount of money to support Starfish Social Services in Matamata. Just an amazing effort!

To the students, have a relaxing, restful and fun holiday. Be kind and be safe. Come back refreshed and ready to 'hit the books' for the twelve and a half weeks of school (Years 11, 12 and 13 students) for them before their study leave leading into external examinations.

UNIFORM SHOP

Order uniform at
Student Reception
8.30am—3.30pm
or email
StudentRecpt@matcol.nz

INDEX

1. End of Term / Reports
2. Community Consultation / Principal's Appointment
3. Agriculture Field Trips

EVENT PLANNER

Mon 26 July
Beginning of Term 3
Mon 2 August
L1 Geo Research Trip
Fri 6 July
Snr Badminton
Mon 9 to Fri 13 Aug
Mathematics Week
Wed 11 Aug
SMASHED Y9/10 Theatre
Thu 12 Aug
TEACHER ONLY DAY
Shooting (Putaruru)
Fri 13 Aug
Jnr Badminton

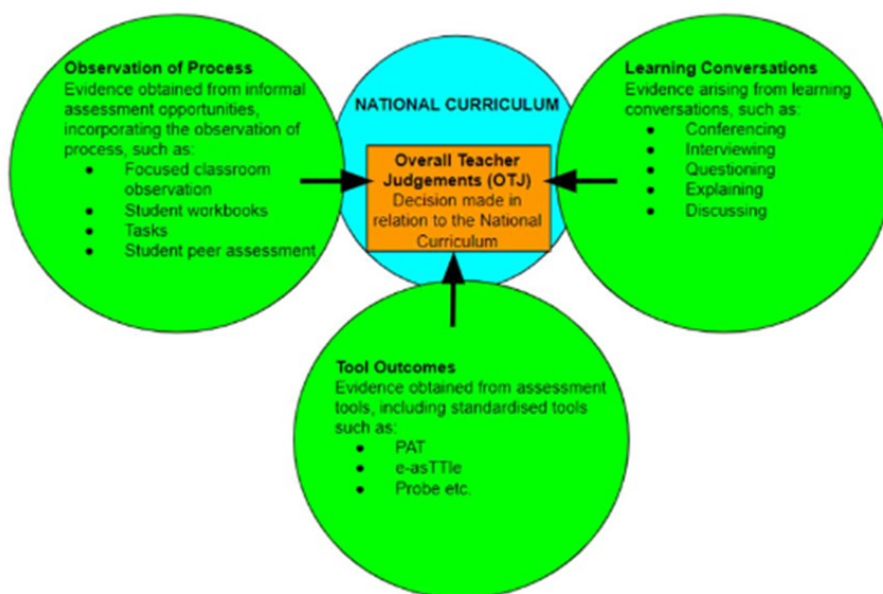
TERM DATES

Term 3 2021
26 Jul to 1 Oct
Term 4 2021
18 Oct to 14 Dec
Term 1 2022
1 February to 14 April

Tracking and NCEA Data

Progress reports—Junior and Senior progress reports are being sent out via email as this goes to print. Below is a brief synopsis of what the reports show.

Junior report -The Junior reports are reporting on acceleration of student progress within curriculum levels. Teachers are using a range of evidence to make an Overall Teacher Judgements of where the students are at. Evidence for these judgements may come from:



The Baseline data is the initial judgement that was made, while the current data is the latest judgement.

Senior reports—The Senior reports are a summary of the number of credits that the student has achieved to-date. A full breakdown of the standards can be found within the parent portal.

There will be a chance to discuss these reports and the progress of your child on **Tuesday 17 August** between 2.30pm and 6.30pm (no appointment necessary). This will be an open day event offering you the opportunity to meet the teachers and view all the classrooms. More information will follow next term.



Secondary School Employer Partnerships



"Maa mahi,
ka ora"



Matamata
College

Community Consultation

The Matamata College Board of Trustees Community Consultation was held in the College Hall on Monday 28 June. Our Chairperson, Craig Alexander opened by outlining the process for the upcoming Charter and strategic plan discussions. Thanks to Deputy Principal, Craig Taylor for his presentation on data measurement and tracking, acceleration and teaching strategies including differentiation. An outline of the Principal Appointment Process was given (see below). Other presentations regarding Property, Finance and Auditing of School Docs were also given. Most importantly, the community members present were given the opportunity to contribute and provide feedback to help shape both the strategic plan for the school and to the characteristics for the new Principal.

The Board are very appreciative to the whole community for their support. We thank the approximately 150 iwi, parents, staff & friends of the school who turned up to show their support and to input to the future direction of the College. Special thanks to our wonderful PTA for the yummy supper provided!

Principal Appointment Process

The Matamata College Board of Trustees Personnel Committee has been delegated the responsibility of the Principal Appointment Process.

Advice

Our first step in this process has been to seek advice, chiefly from NZ School Trustees Association, and also from other experts in education and school governance. The resounding theme of this advice has been to ensure we have a thorough process and not to rush the decision. We should expect this to take at least 18 weeks. Thus, whilst it would be ideal to have a new Principal in place this year it is most likely that this will be the start of 2022 as opposed to term 4 2021. This is the most important decision the board is ever likely to make; thus, we need to make a sound decision, not a hasty one!

Consultant

We have also been advised to engage a consultant for the process, and to choose this person carefully as to a fit with our board and our philosophies. After scouting several possibilities, we have settled on Wayne Gribble as our consultant. Wayne is a director of New Zealand Education Consultants Limited and Teaching Excellence New Zealand Limited and comes to us highly recommended.

Selection Criteria

The next step in the process is to identify our selection criteria. These are the characteristics we want in a principal. To define this, we consult our school stakeholders: community, staff, iwi, students. We combine this feedback alongside the needs of our school – our vision, charter, strategic goals and special school requirements and characteristics.

These criteria are then used to define the role description/person specification. These criteria will be used throughout the appointment process i.e., in the advertisement, shortlisting, reference checking and the decision-making process.

Timeline

The envisaged timeline is:

9 July	Application Pack completed
12 July	Advertisement goes 'live'
9 August	Closing date for applications
14 August	Shortlisting completed
16-20 August	School visits
21 August	Interviews
3 September	Appointment confirmed



Updates

We will keep you updated as we progress through this process. Obviously, we need to respect the confidential nature of the detail but will provide regular updates of where we are at as we proceed.



"Maa mahi,
ka ora"



Matamata
College

Agriculture Fieldtrips

Both days were thoroughly enjoyed and engaged in by all attendees; they took these "In the field" learning opportunities by the horns, providing the platform for leadership and experience of the rural community and lifestyle.

First trip was with our Y11 students to **OWLL Farm**, St Peters High School in Cambridge. It was a seminar type day that had wonderful interactive activities, catering to different learning styles and knowledge of our students, and everyone felt they had something to contribute and learn throughout the day. The school farm is one of three farms across New Zealand that is in partnership with Lincoln University. This provides research opportunities and funding for many industry technologies and knowledge to be applied on farm, and to be experienced by anyone who attends the workshop/training opportunity days. This farm represents the "crem-de-la-crem" of what the industry has on offer, with sustainability and ideal practices frontmost and center for our students to see and experience first hand. Activities included a farm walk to see the facilities, topography, environmental elements and diverse-practices that the farm has to

consider and engage in during its day-to-day running. Students had multiple stations to gather information, experience hands-on knowledge, demonstrations and information boards to scientifically present research to support anecdotal findings. We were also accompanied by the resident Labrador - being a retired guide-dog, she was a great companion for the day! Spot prizes were provided and a competition for assessing Pet-calf "Frankie's" weight was awarded to two of our students - Lincoln Uni sponsored jumper hoodies on offer. University information packs were also provided.



Second trip - which is an event synonymous with any Agriculture/Horticulture subject - was the Infamous **Mystery Creek Field Days**. Having been cancelled last year because of Covid, this years' trip was both memorable and unfathomably busy! Our students displayed admirable patience to even get into the grounds, and responsibly/respectfully conducted themselves during the days itinerary. Every notable (and especially emerging) brands, technologies and innovations were on offer to see and experience, as well as the appreciated retail therapy - many of our students having to limit themselves, with so much on offer! An attraction many were excited about were the food court, tractor pulling and the Young Farmer fencing competitions. Luckily the weather played-ball for the most part, and there were buses available to return to the parking spaces - all playing a part in the enjoyment of the day!



“Maa mahi,
ka ora”



Matamata
College

Defensive Driving Course:



This is a four-day course held at the Matamata College premises from 5pm to 7 pm in Classroom V2:

Tuesday: 10th August 2021

Thursday 12th August 2021

Tuesday 17th August 2021

Thursday 19th August 2021

To book please email Mr James Turney on:

jturney@xtra.co.nz

Cell Phone Use

Matamata College teaching staff have reviewed the management of the cellphone policy and their use in classrooms. As a result, it has been decided that from Friday 2 July 2021, all students will be expected to place their cellphones in the designated phone box upon entry to the classroom. Cellphones will be collected by students at the end of the lesson.

The idea behind this is to improve engagement in student learning and reduce distractions.

Students who have laptops/computers need to bring them to school.



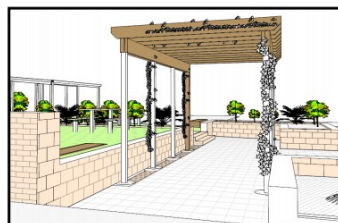
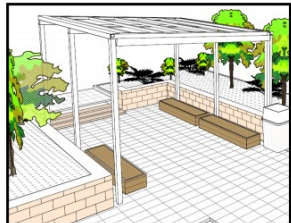
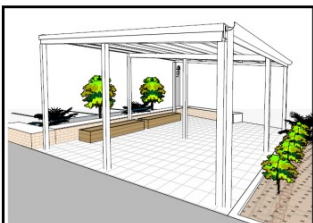
Reid Place Development



There is some recycling being done with the old cobblestones. Planting is to be confirmed but will be natives.

The Green area in the plans are artificial turf and two of the shelters will be a all weather covering to provide a bit more wet weather shelter in the school.

Please note; currently the budget does not extend to the furniture depicted in the plan. Depending on any construction over runs (or not) we may have some funds left over to purchase some items.



PTA may fundraise (or apply for grants) towards some of this. The BOT may contribute additional funds from its reserves or we budget for the outdoor furniture in the 2022 Capital Expenditure budgets and it would be installed in the Christmas break.